

# OHSP Test Report

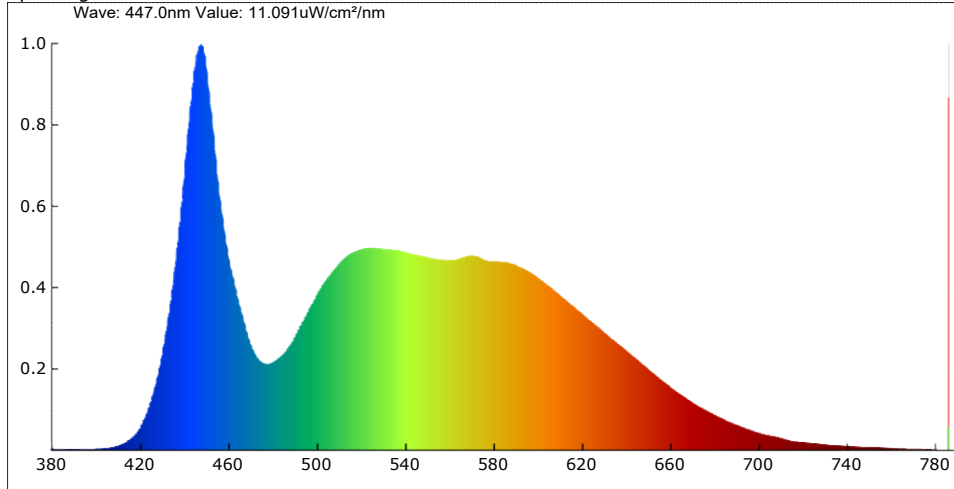
**Product Mark**

Model:	Manufacture:
Temperature: 20°C	Humidity: 65%
Tester: admin	Test Date: 2024-06-22,10:37:51

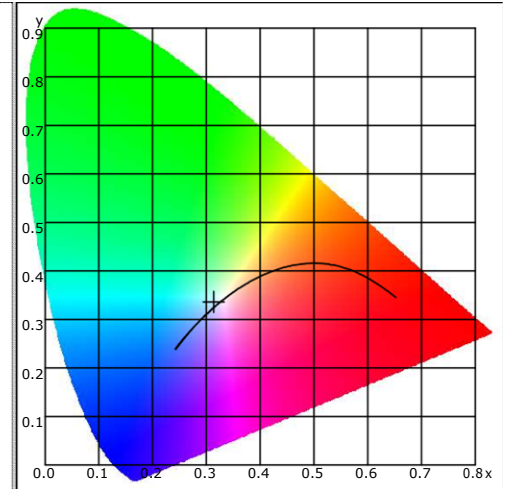
**Parameter**

Name	Value	Name	Value	Name	Value
Φ(lm)	3613.40	Φe <sub>ir</sub> (mW/cm <sup>2</sup> )	0.313	TLCI-2012	74
η(lm/W)	120.81	Φe <sub>c</sub> (mW/cm <sup>2</sup> )	0.000	Integral Time(ms)	34
CCT(K)	6413	S/P	0.355	Peak Signal	56815
Duv	0.00613	TM-30 Rf	82.44	Dark Signal	3735
CIE x,y	0.3136,0.3357	TM-30 Rg	96.77	Compensate level	2896
CIE u,v	0.1960,0.3146	Dominant(nm)	493.30	Voltage(V)	219.755
CIE u',v'	0.1960,0.4720	Purity(%)	6.5	Current(A)	0.140
SDCM	1.30	HalfWidth(nm)	22.7	Power(W)	29.910
Ra	82.7	Peak(nm)	447.7	Power Factor	0.970
Φe(W)	11575.104	Center(nm)	448.5		
Φe <sub>uv</sub> (mW/cm <sup>2</sup> )	7.691	Centroid(nm)	539.1		
Φe <sub>b</sub> (mW)	3755.743	Color Ratio(RGB)	13.3,83.3,3.4		
Φe <sub>y</sub> (mW)	5250.549	CIE1931 X	4942.251		
Φe <sub>r</sub> (mW)	2361.761	CIE1931 Y	5290.487		
Φe <sub>f</sub> (mW/cm <sup>2</sup> )	0.000	CIE1931 Z	5528.272		

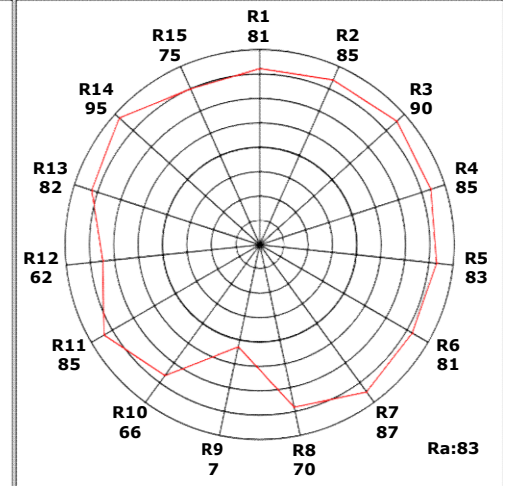
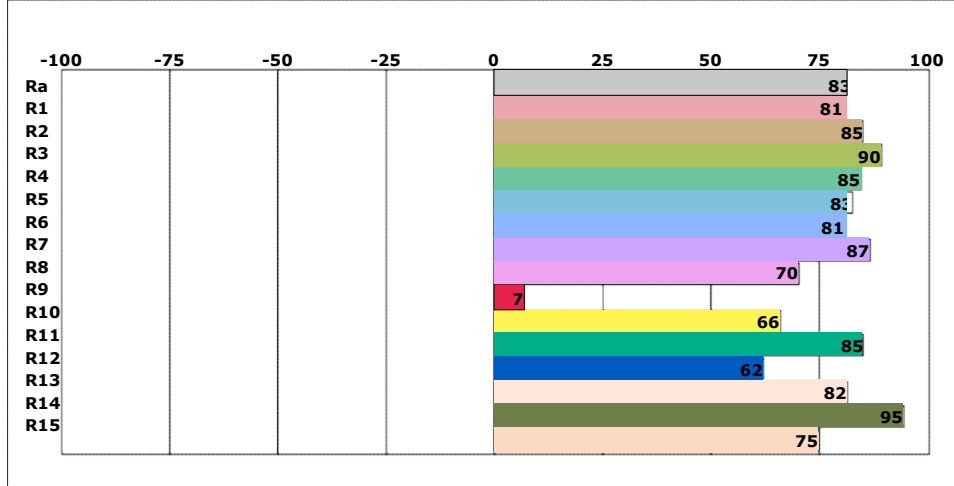
**Spectrogram**



**CIE1931**



**CRI**



**Instrument Status**

Type: HPCS6500	SN: 652112031	Scan Range: 380-780nm
Integral Time: 34.000ms	VPeak: 56815	VDark: 3735

**Remark:**