

OHSP Test Report

Product Mark

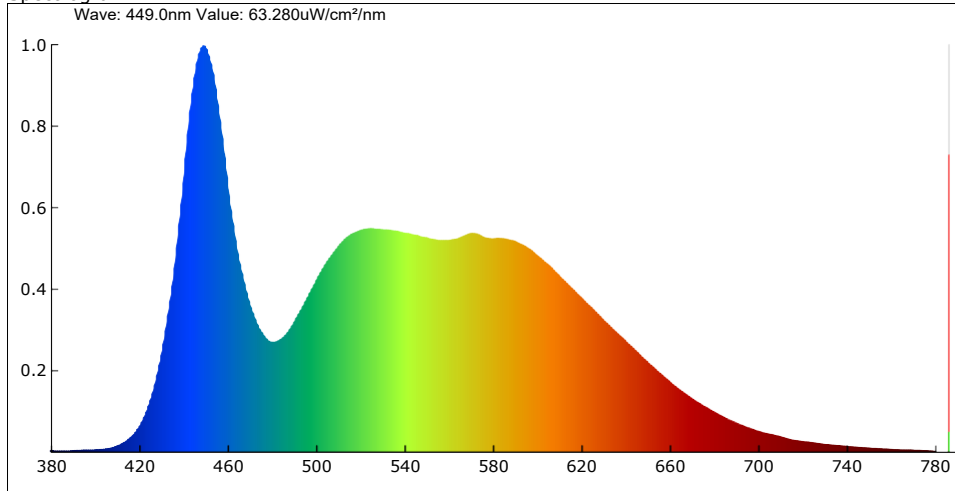
Model:
Temperature: 20°C
Tester: admin

Manufacture:
Humidity: 65%
Test Date: 2024-06-22,08:34:44

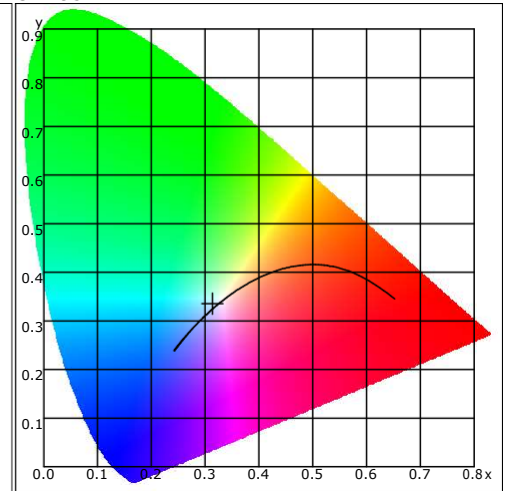
Parameter

| Name | Value | Name | Value | Name | Value | Name | Value |
|--|---------------|--|---------------|-------------------|---------|------|-------|
| Φ(lm) | 23252.09 | Φe _{ir} (mW/cm ²) | 2.947 | TLCI-2012 | 74 | | |
| η(lm/W) | 114.91 | Φe _c (mW/cm ²) | 0.000 | Integral Time(ms) | 5 | | |
| CCT(K) | 6417 | S/P | 0.348 | Peak Signal | 47831 | | |
| Duv | 0.00583 | TM-30 R _f | 83.35 | Dark Signal | 3206 | | |
| CIE x,y | 0.3136,0.3351 | TM-30 R _g | 95.92 | Compensate level | 2886 | | |
| CIE u,v | 0.1962,0.3144 | Dominant(nm) | 492.90 | Voltage(V) | 220.623 | | |
| CIE u',v' | 0.1962,0.4716 | Purity(%) | 6.6 | Current(A) | 0.929 | | |
| SDCM | 1.69 | HalfWidth(nm) | 27.8 | Power(W) | 202.357 | | |
| R _a | 83.6 | Peak(nm) | 449.6 | Power Factor | 0.987 | | |
| Φ _e (W) | 74975.047 | Center(nm) | 450.8 | | | | |
| Φ _{euv} (mW/cm ²) | 71.825 | Centroid(nm) | 539.5 | | | | |
| Φ _{eb} (mW) | 24338.711 | Color Ratio(RGB) | 13.4,82.9,3.7 | | | | |
| Φ _{ey} (mW) | 33175.402 | CIE1931 X | 31861.146 | | | | |
| Φ _{er} (mW) | 15047.373 | CIE1931 Y | 34044.055 | | | | |
| Φ _{efr} (mW/cm ²) | 0.000 | CIE1931 Z | 35702.523 | | | | |

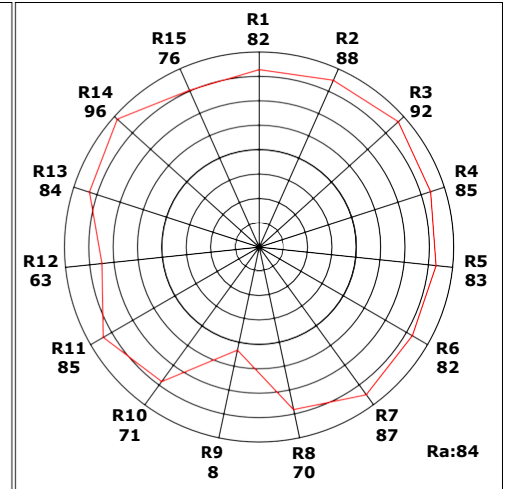
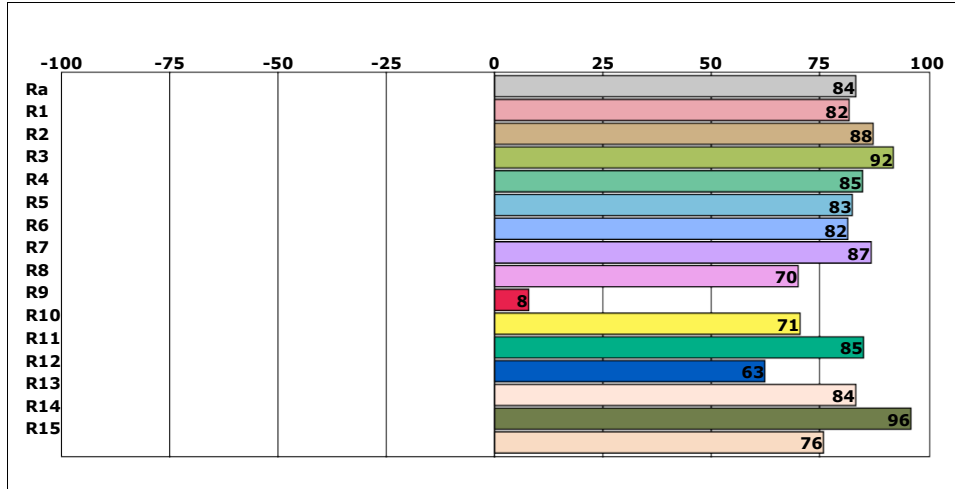
Spectrogram



CIE1931



CRI



Instrument Status

Type: HPCS6500
Integral Time: 5.000ms

SN: 652112031
VPeak: 47831

Scan Range: 380-780nm
VDark: 3206

Remark: