

OHSP Test Report

Product Mark

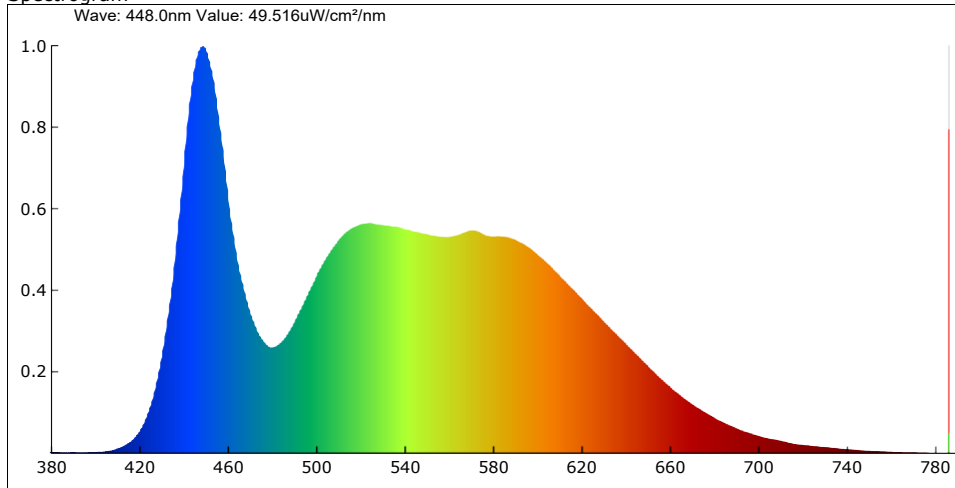
Model:
Temperature: 20°C
Tester: admin

Manufacture:
Humidity: 65%
Test Date: 2024-06-22,11:57:52

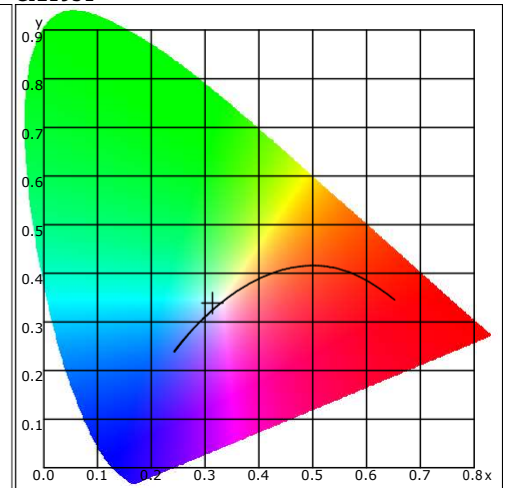
Parameter

Name	Value	Name	Value	Name	Value
Φ(lm)	18096.94	Φe _{ir} (mW/cm ²)	0.626	TLCI-2012	72
η(lm/W)	118.51	Φe _c (mW/cm ²)	0.000	Integral Time(ms)	7
CCT(K)	6391	S/P	0.330	Peak Signal	52041
Duv	0.00733	TM-30 Rf	82.68	Dark Signal	3197
CIE x,y	0.3137,0.3382	TM-30 Rg	95.35	Compensate level	2886
CIE u,v	0.1951,0.3155	Dominant(nm)	494.90	Voltage(V)	220.281
CIE u',v'	0.1951,0.4733	Purity(%)	6.3	Current(A)	0.708
SDCM	0.64	HalfWidth(nm)	27.0	Power(W)	152.703
Ra	82.9	Peak(nm)	448.5	Power Factor	0.979
Φ _e (W)	57355.102	Center(nm)	450.4		
Φ _{euv} (mW/cm ²)	25.128	Centroid(nm)	538.6		
Φ _{eb} (mW)	18729.115	Color Ratio(RGB)	13.1,83.3,3.5		
Φ _{ey} (mW)	26560.412	CIE1931 X	24577.914		
Φ _{er} (mW)	11482.506	CIE1931 Y	26496.248		
Φ _{efr} (mW/cm ²)	0.000	CIE1931 Z	27267.877		

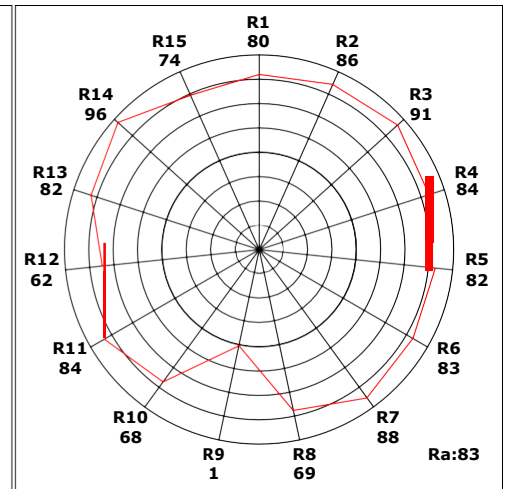
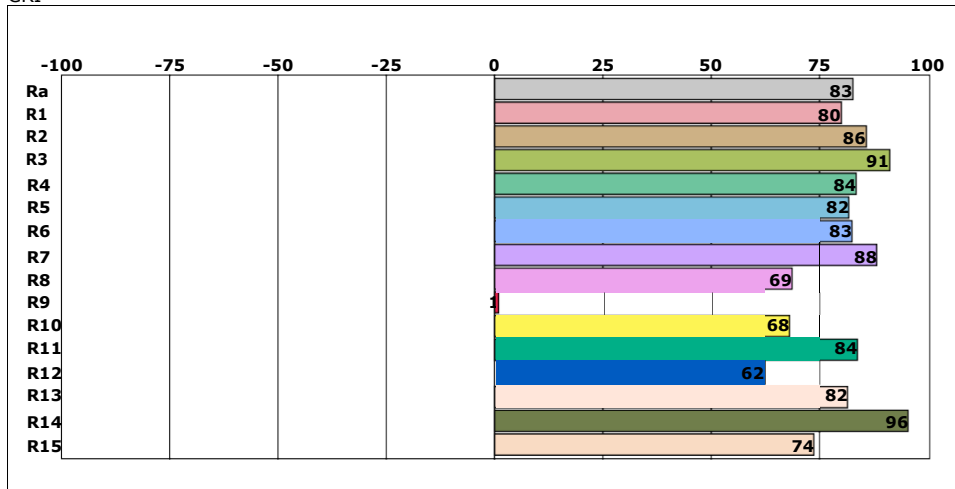
Spectrogram



CIE1931



CRI



Instrument Status

Type: HPCS6500
Integral Time: 7.000ms

SN: 652112031
VPeak: 52041

Scan Range: 380-780nm
VDark: 3197

Remark: