

OHSP Test Report

Product Mark

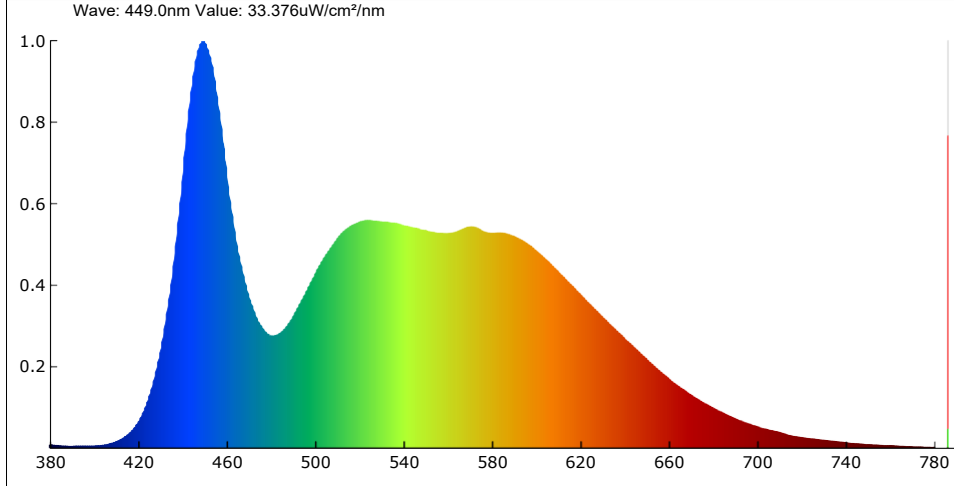
Model:
Temperature: 20°C
Tester: admin

Manufacture:
Humidity: 65%
Test Date: 2024-06-22,11:19:28

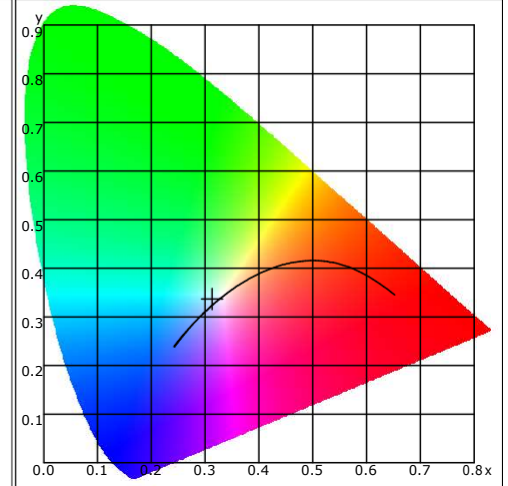
Parameter

Name	Value	Name	Value	Name	Value
Φ(lm)	12375.19	Φe _{ir} (mW/cm ²)	1.420	TLCI-2012	73
η(lm/W)	123.88	Φe _c (mW/cm ²)	0.000	Integral Time(ms)	10
CCT(K)	6448	S/P	0.347	Peak Signal	50253
Duv	0.00682	TM-30 Rf	83.13	Dark Signal	3046
CIE x,y	0.3128,0.3363	TM-30 Rg	95.42	Compensate level	2886
CIE u,v	0.1952,0.3148	Dominant(nm)	493.60	Voltage(V)	219.872
CIE u',v'	0.1952,0.4722	Purity(%)	6.7	Current(A)	0.466
SDCM	0.38	HalfWidth(nm)	27.8	Power(W)	99.897
Ra	83.0	Peak(nm)	449.6	Power Factor	0.975
Φ _e (W)	39720.184	Center(nm)	451.0		
Φ _{euv} (mW/cm ²)	49.664	Centroid(nm)	539.1		
Φ _{eb} (mW)	12946.970	Color Ratio(RGB)	13.2,83.1,3.7		
Φ _{ey} (mW)	17739.557	CIE1931 X	16854.277		
Φ _{er} (mW)	7899.828	CIE1931 Y	18118.879		
Φ _{efr} (mW/cm ²)	0.000	CIE1931 Z	18900.598		

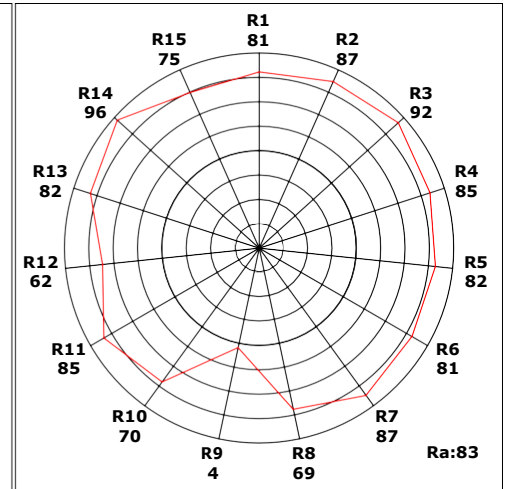
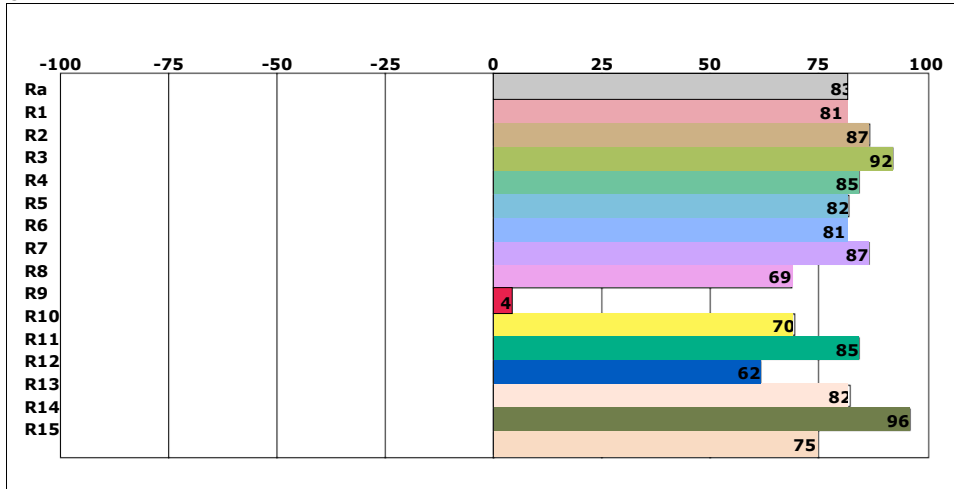
Spectrogram



CIE1931



CRI



Instrument Status

Type: HPCS6500
Integral Time: 10.000ms

SN: 652112031
VPeak: 50253

Scan Range: 380-780nm
VDark: 3046

Remark: