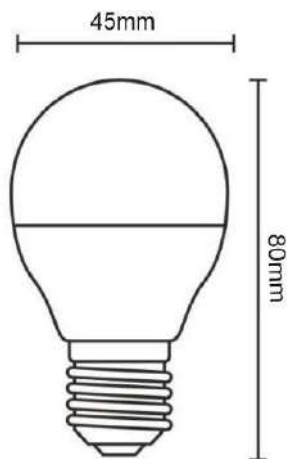


PRODUCT DATA SHEET

G45 | 5W



Dimensions:



Advantages:

- High efficiency-energy saving over 80%
- Long life-15000 hours under normal use
- Eco friendly-no environmental-harmful elements
- Reliable-excellent driver system & efficient heat management
- High quality light without IR or UV radiation
- Fast response even in low temperature
- Compact size fits most fixtures

<https://www.superlight.tn>

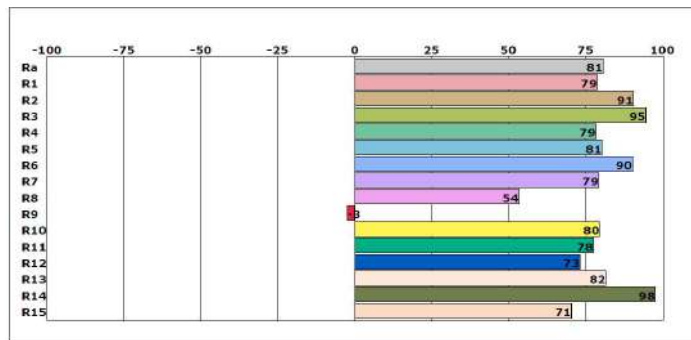
Features:

Brand	Superlight
Wattage	5W
Equiv. Wattage	Halogen 40W
Voltage	175-250V AC
Lamp Base	E27
Luminous Flux	410Lm
Luminous Efficacy	80Lm/W
Dimensions	φ45x80mm
Lifetime	15.000 hours
Beam Angle	180°
IP Rating	IP20
CRI%	>80
PF	>0.5
SDCM	1.08
Colour Temperature	3000K°/4000K°/6500K°
Energy Efficiency Index (EEI)	A+
Weight	18g
Warranty	One year

Model No.

G45 LED 5w E27

Colour Rendering Index CRI:



Product Features:

- Using high lumen SMD light source.
- Using good reflectivity light, it is thinner and brighter, the light is more equally.
- Low voltage & constant current driver, no glare, the light is soft.
- No flashing, no noise, no radiation and energy saving.
- This product can show high brightness, without seeing the lamp itself.

Superlight®