

PRODUCT DATA SHEET

TUBE T45 | 12W

Features:

Brand	Superlight
Wattage	12W
Equiv. Wattage	Halogen 80W
Voltage	175-250V AC
Lamp Base	E27
Dimensions	φ45x133mm
CRI%	>80
PF	>0.5
Luminous Flux	1200Lm
Luminous Efficacy	100Lm/W
Lifetime	15.000 hours
IP Rating	IP20
SDCM	< 3
Colour Temperature	3000K°/4000K°/6500K°
Energy Efficiency Index (EEI)	A+
Weight	51g
Warranty	One year

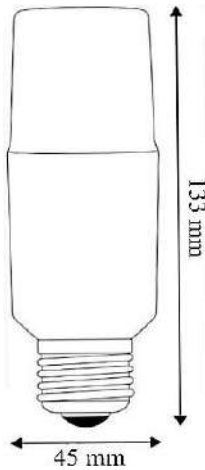


Superlight®

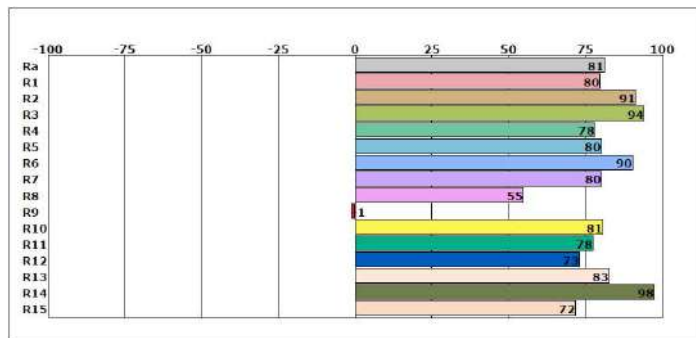
Model No.

T45 LED 12w E27

Dimensions:



Colour Rendering Index CRI:



Advantages:

- High efficiency-energy saving over 80%
- Long life-15000 hours under normal use
- Eco friendly-no environmental-harmful elements
- Reliable-excellent driver system & efficient heat management
- High quality light without IR or UV radiation
- Fast response even in low temperature
- Compact size fits most fixtures

<https://www.superlight.tn>

Product Features:

- Using high lumen SMD light source.
- Using good reflectivity light, it is thinner and brighter, the light is more equally.
- Low voltage & constant current driver, no glare, the light is soft.
- No flashing, no noise, no radiation and energy saving.
- This product can show high brightness, without seeing the lamp itself.