



Wireless Multiroom Audio Streaming System

**LCS02 Wireless Stereo Audio Streaming
Amplifier**

Quick Start Guide

Introduction

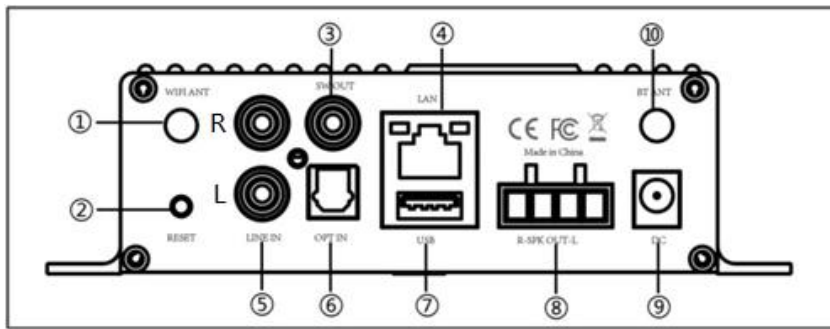
This class D digital amplifier is of great performance and especially designed to meet the high demand of the installation market. This power amplifier can drive and make your traditional passive speaker smart. With the free iOS and Android applications, you can easily control your smart audio system. You can stream the same music to all zones or different music to different zones, no matter the music from the local storage like cell phone memory, NAS, USB flash disk and hard disk or online streaming services such as Spotify, Tidal, TuneIn, iHeartRadio, Napster and so on.

Contents

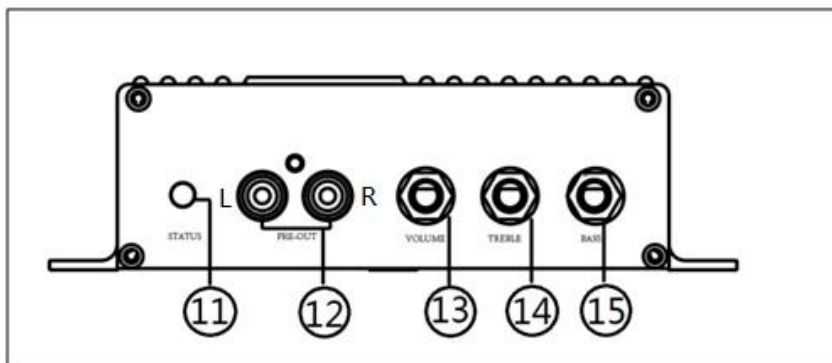


- LCS02 x1
- Power supply x1
- RCA cable x2
- Antennas x2
- QSG x1

Interface and Functions

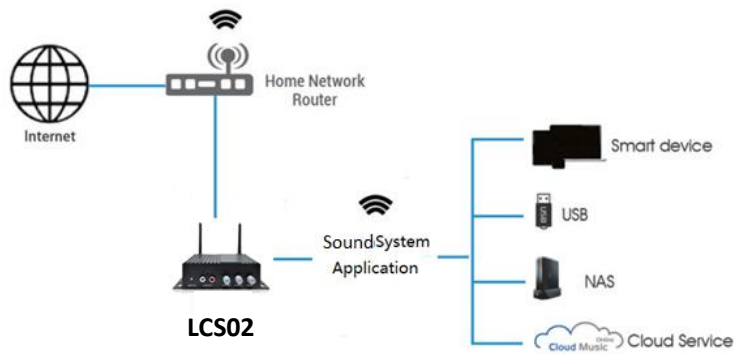


- ① WiFi Antenna: Used for WiFi connection
- ② Reset: Used to reset the device if you have a problem with your WiFi connection
- ③ Subwoofer out: Used to connect to an active subwoofer
- ④ Network connection: RJ45 used to connect to a wired Ethernet network
- ⑤ Line input: Analog input used to connect audio devices via an RCA cable
- ⑥ Optical: Used to provide digital input from a 2.1 optical equipped device
- ⑦ USB input: Used to connect local storage devices
- ⑧ Speaker terminals: Phoenix speaker terminal used to connect to 8 Ohms speakers
- ⑨ Power input: DC power input used to connect the power adaptor
- ⑩ Mobile wireless antenna: Used to pair with mobile devices using a popular wireless service



- ⑪ LED: Indicates the status of the device
 - Blinking White: Power on or Network Connecting
 - Solid White: Network connected, WiFi and USB streaming
 - Solid Blue: Wireless Input Active
 - Solid Green: Line Input Active
 - Solid Purple: Optical Input Active
- ⑫ Pre out: Used to provide analog signal to another amplifier
- ⑬ Volume: Used to manually tune the device volume
- ⑭ Treble: Used to manually tune the treble
- ⑮ Bass: Used to manually tune the bass

How it works



Installation Guide

1. Unpack

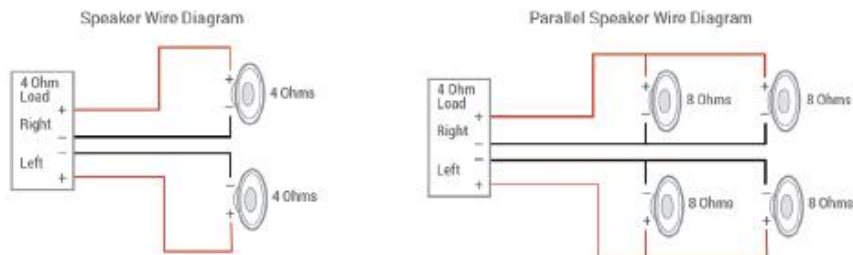
Verify all the accessories are included in the package.

2. Place

Fix the amplifier at a safe and proper location. An integrated mounting bracket allows mounting to a wall or surface, but we suggest making sure you complete all installation steps before permanently mounting.

3. Connect

Speaker Wiring Diagrams (LCS02 can handle speakers from 4-16ohms impedance)

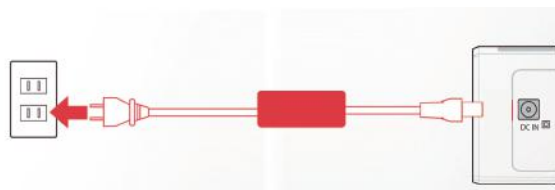


Speaker Wire Connection

Properly wire the male phoenix connectors on the amplifier, noting positive and negative terminals match with the positive and negative terminals on your speaker.

Power connection

Power the amplifier with the power adapter included in the accessories.



4. Download the App

Download the 4STREAM application from the App Store for iOS and Google Play for Android.

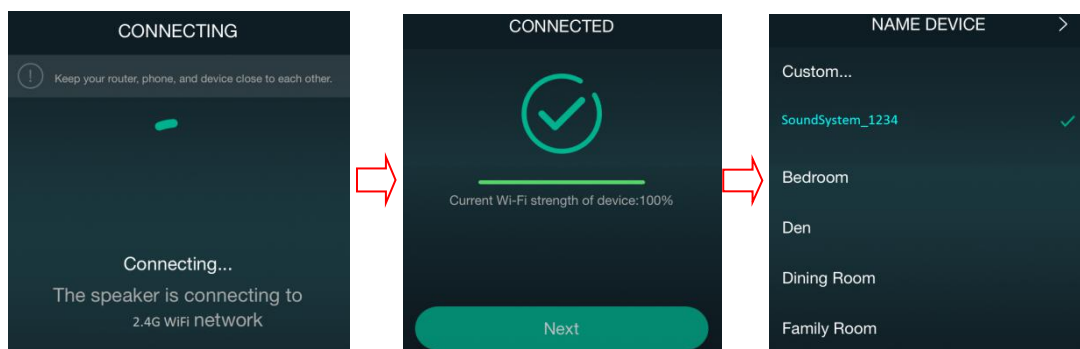
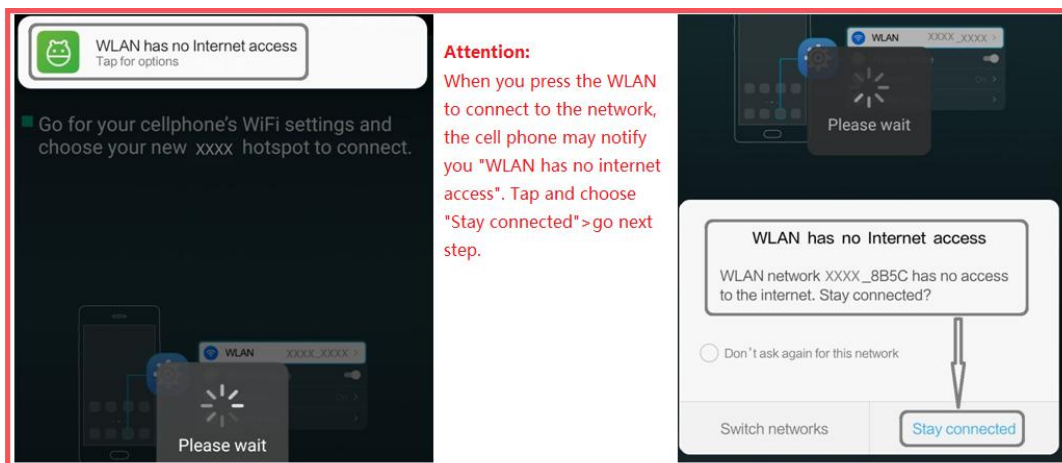
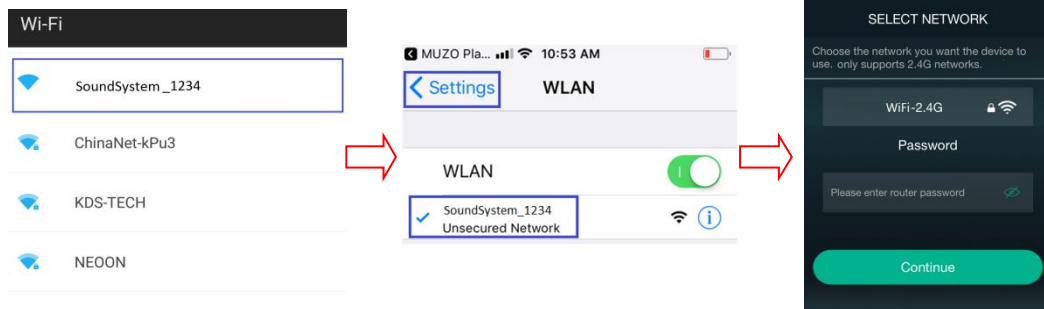


5. Configure

Option 1- Configuration via app

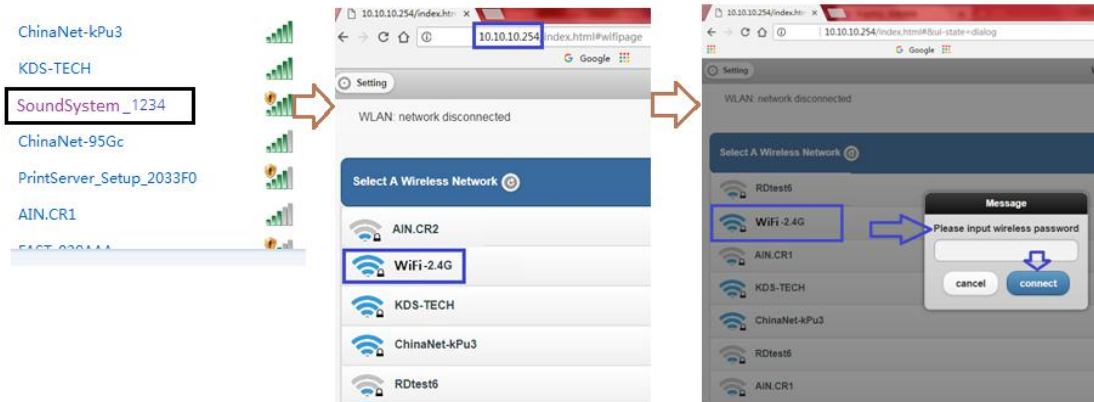
-Connect your mobile devices to your network.

-Open the application> press Add Device(+)>choose settings> choose the SoundSystem_1234 hotspot> after connected, press the 'turn back' on your WLAN settings> the app will jump to the configuration step>choose the 2.4G network and enter the password>wait for the device to be configured.



Option 2- Configuration via Web console

- 1. Power the device.
- 2. Choose the hotspot(SoundSystem_ xxxx) in the WiFi setting on your cell phone or computer and connect to it.
- 3. Open the browser and enter 10.10.10.254
- 4. Go for WiFi>choose you 2.4G router>enter the password> click connect> wait for the device to be configured.

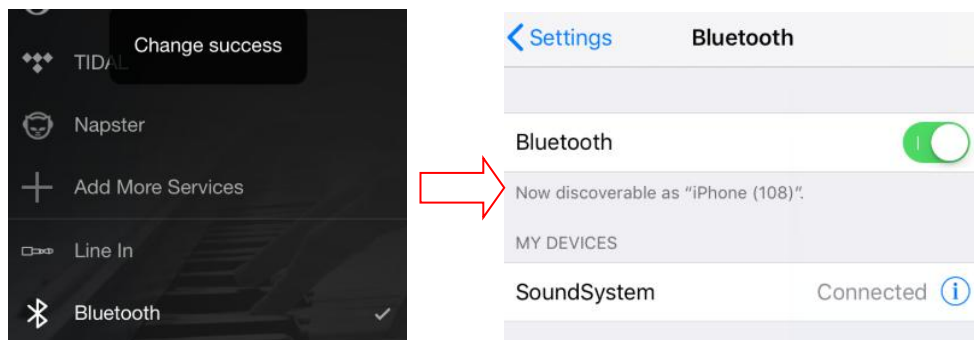


Option 3-Connection via LAN

- Power the device
- Plug in the wired cable to the RJ45 Ethernet, the device will show on the app in about 10 seconds.

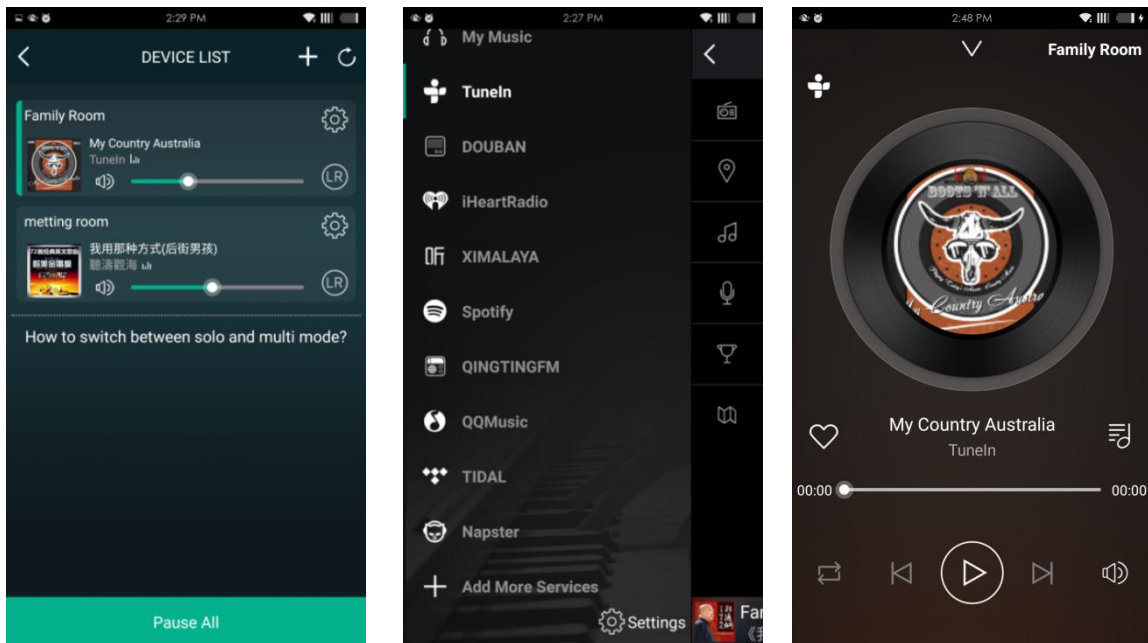
Option 4-Bluetooth pair

Open the app>choose the Bluetooth mode > open the Bluetooth on the mobile device >Pair to device Bluetooth "SoundSystem"> once connected, you will hear a sound prompt.



App Photo Gallery:

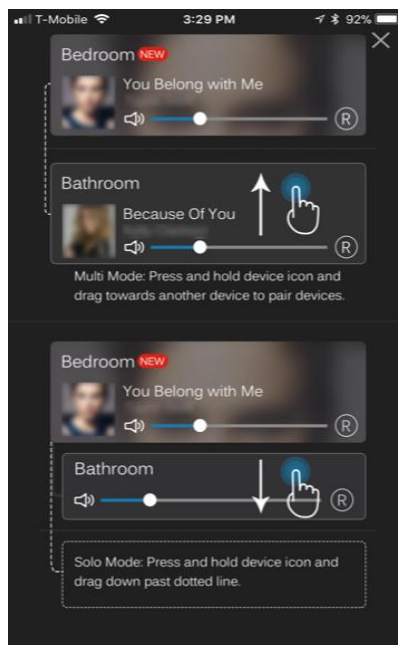
Playback Your Device List will show all available zones. Press a zone to see the information on the current source. While on the view for the source, swipe right to reveal the available sources. From there, you can select what source you want to hear next, or swipe left to return to the currently playing source.



You also have the ability to combine zones so that each zone is playing the same source at the same time.

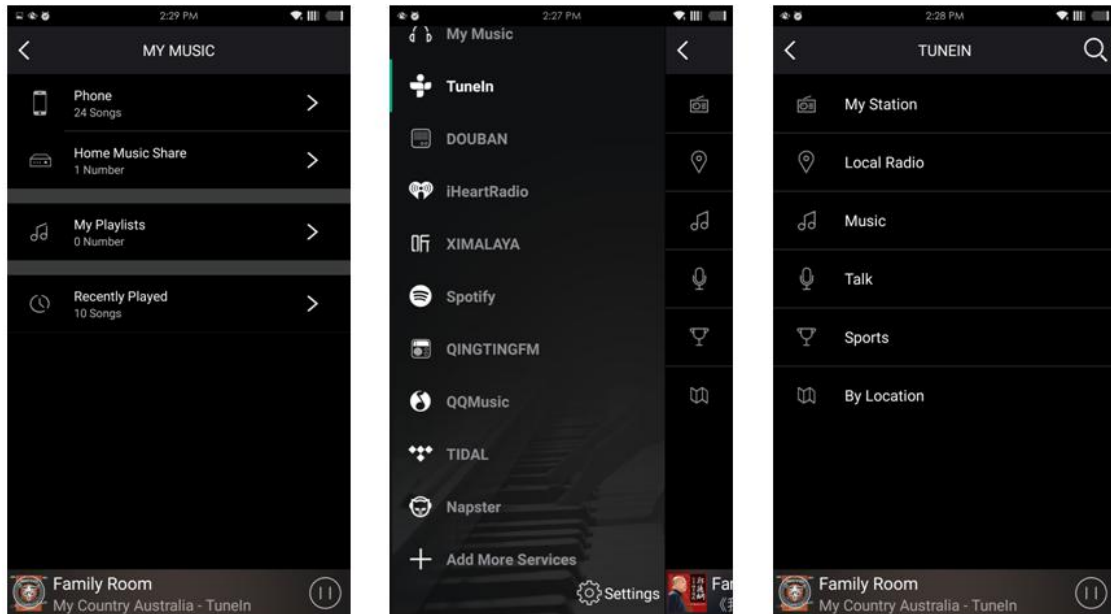
Just press your finger on the zone you want to play what another zone is playing until it indicates it is ready to merge. Then, drag it on top of the master zone and release. In roughly 30 seconds, the zones will combine.

To separate zones, repeat the process, but this time drag the zone you want to free below the dotted line.



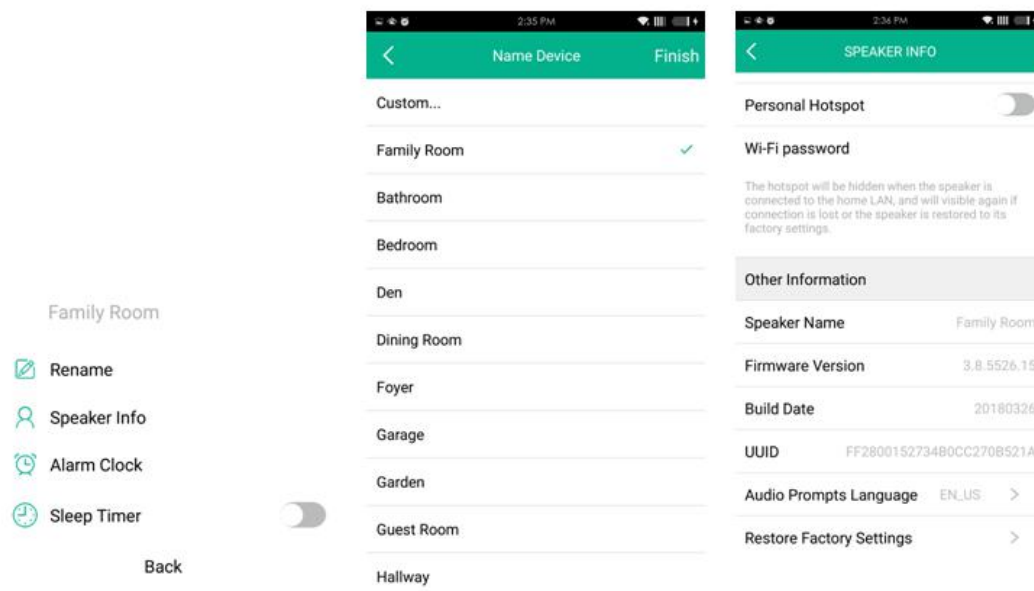
Streaming from Cell phone memory/NAS/Online Music Services

These screens let you access your available music, whether it be hard files on your network or connected to your a-live hardware, or what streaming options you've selected to be available.



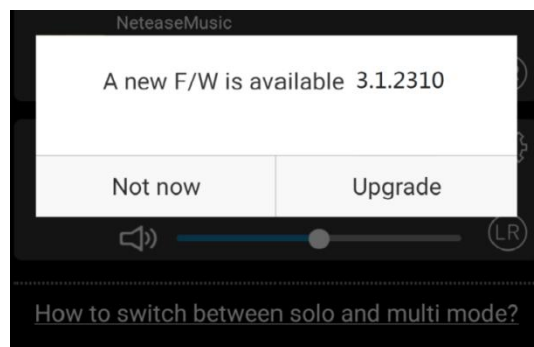
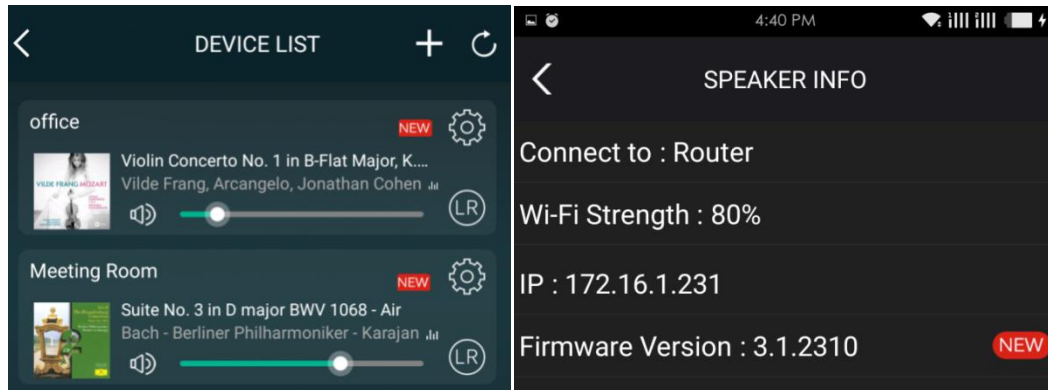
Device Settings:

Through device settings you can set an alarm clock or sleep timer, get technical information on your speaker, or rename it.



Firmware update

LCS02 will notify you in your app when there is a new firmware version available. It's recommended to update firmware whenever available as this might not only correct bugs or improve security, but could also add new features or services.



Technical Specifications

Connectivity	Wireless network	IEEE802.11 b/g/n 2.4G
	LAN	single 10/100M RJ45
	Bluetooth	4.2
Frequency Response	20Hz to 20kHz	
Power input	DC 24V, 6A	
Audio Source Input	USB 2.0, Analog RCA, Optical(2.1)	
Audio Source Output	Analog RCA, Subwoofer	
Treble	Yes	
Bass	Yes	
Volume Knob	Yes	
Dimensions:	6.25 " L x 5.75 " W x 1.6 " H(15.8x14.6x4CM)	
Weight	1.2 Lbs(0.54kg)	
Music format	MP3/AAC/AAC+/ALAC/APE/WAV	
Decoding	Up to 24bit/192kHz	